



POOL & SPLASH HOURS:

SUNDAY – THURSDAY
9AM - 9PM

KITCHEN HOURS 9-9PM

FRIDAYS 9AM – 2AM
KITCHEN HOURS 9-11:45PM

SATURDAYS 9 AM – 2 AM
KITCHEN HOURS 9-11:45 PM

CIGAR BAR HOURS

FRIDAY – SATURDAY
7:30PM – 1 AM

WOODY'S NIGHTCLUB

MONDAY, THURSDAY, AND
FRIDAY
7:30PM- 1:30 AM

SATURDAY 5:30PM - 1:30 AM

LUCY'S GENERAL STORE

SATURDAY- THURSDAY
8AM-5PM

FRIDAYS 8AM-8PM

*COFFEE AVAILABLE
24HRS IN THE
GATEHOUSE

ADULT WINTER CAMP

THURSDAY

9A-11A BREAKFAST POOLSIDE ✕
8 PM ANGEL SHERIDAN CABARET
SHOW AND NUDE BILLIARDS IN
BLADE ☉

FRIDAY

12PM DISCO POOL PARTY
5PM FISH AND SHRIMP FRY ✕
7PM SOLO CAMPER MEETUP AT
THE CIGAR BAR
8 PM COMEDY BINGO – HOSTED BY
TRIXIE DELUXXE
10PM-1:30AM DANCE PARTY with
DJ GREG ANDERSON 🕺

SATURDAY

9A-11A BREAKFAST BUFFET ✕
12PM T-DANCE W/ DJ: MAJOR TOM
🕺
1 PM WINTER CAMP GAMES
POOLSIDE
5PM STEAK AND CHICKEN COOKOUT
6 PM EARLY BIRD DRAG SHOW
(BUY 1 GET 1 DRINKS)
7PM BROADWAY SING-A-LONG
8 PM GREATEST LOVE OF ALL
TRIBUTE SHOW – A Salute to the
WHITNEY HOUSTON!

10PM-1:30AM DANCE PARTY WITH
DJ WAYNE 🕺

SUNDAY

9A-11A BREAKFAST ✕
12PM SUNDAY T-DANCE \$3 MIMOSAS &
BLOODY MARY'S

MONDAY

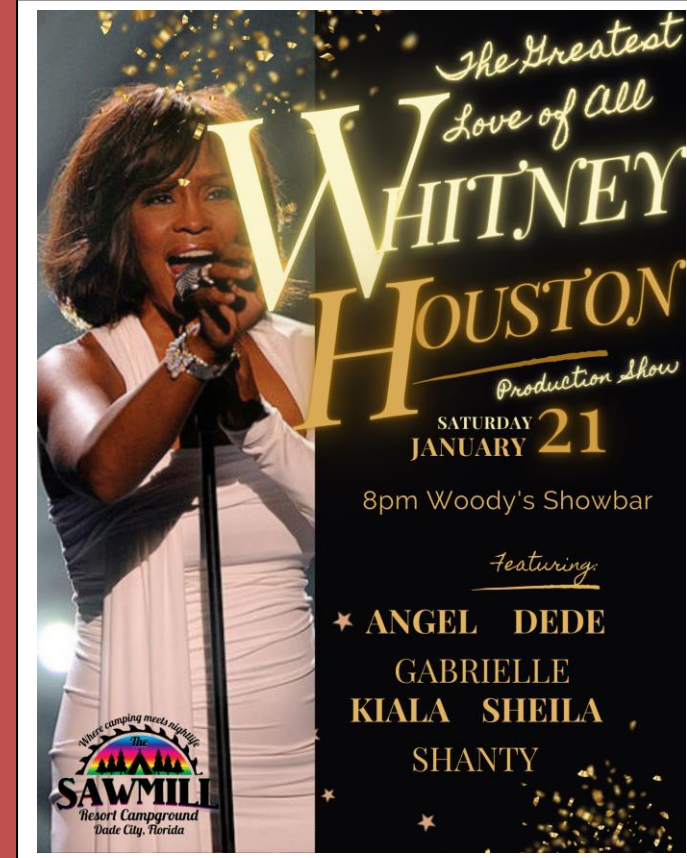
9AM POOL OPENS
9A-11A BREAKFAST POOLSIDE ✕
12PM POOL PARTY 🕺
7:30PM SAWMILL CAMP DRAG BINGO
WITH IONA & PEACHES 🕺

TUESDAY

7:30PM TACO, TEQUILLA, & TRIVIA W/
SIMEON

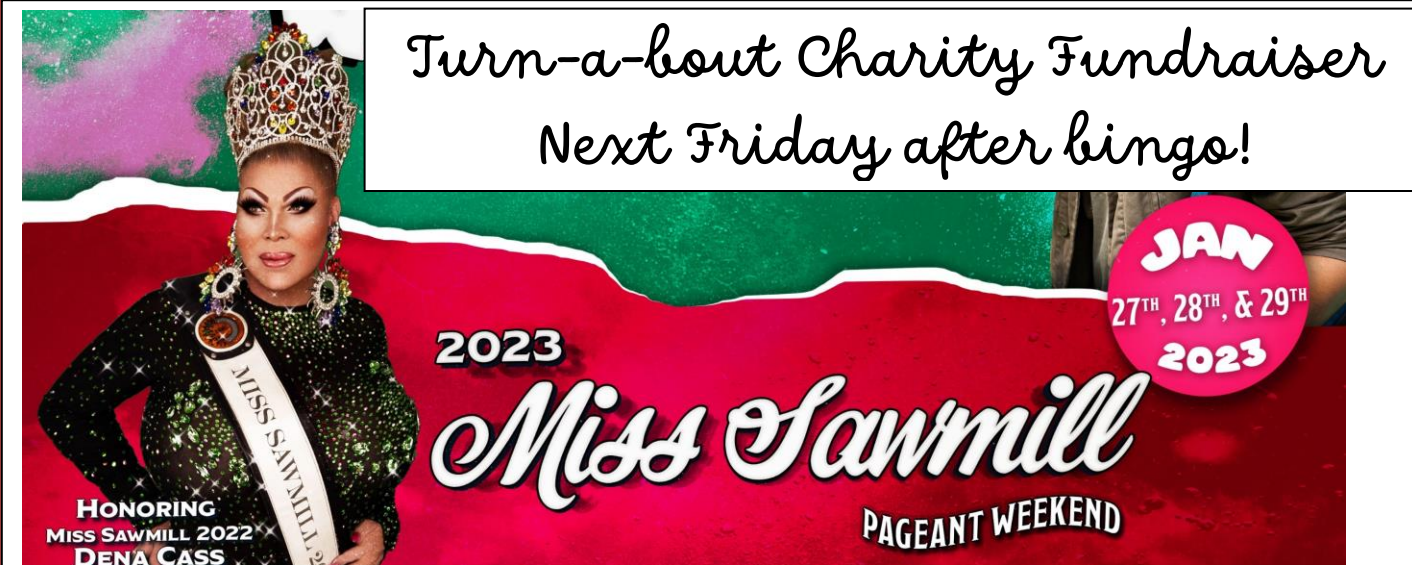
WEDNESDAY

5PM CAMP POTLUCK 🕺
6PM SPLASH KARAOKE 🕺



FRIDAY'S BINGO CALLER:

TRIXIE



SAWMILL

TEXT US
24 HRS A DAY
7 DAYS A WEEK

- Need Showtimes?
- Extend your reservation?
- Maintenance?

Please don't hesitate to text us if you see anything that needs our attention. We want to make this resort as relaxing and comfortable as possible for our members.

Text the Care Line
352-221-9232
Floridagaycamping.com




Justin Pamplin
GENERAL MANAGER